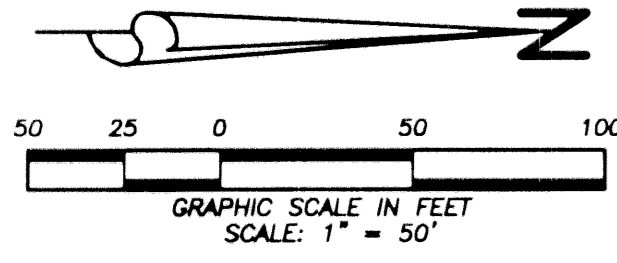


FRENCHMAN'S RESERVE PCD - PLAT "D"

BEING A REPLAT OF TRACT D, FRENCHMAN'S RESERVE PCD - PLAT ONE
AS RECORDED IN PLAT BOOK 92, PAGES 11-20,
IN PALM BEACH COUNTY, FLORIDA

LYING IN SECTION 31,
TOWNSHIP 41 SOUTH, RANGE 43 EAST, CITY OF PALM BEACH
GARDENS, PALM BEACH COUNTY, FLORIDA.

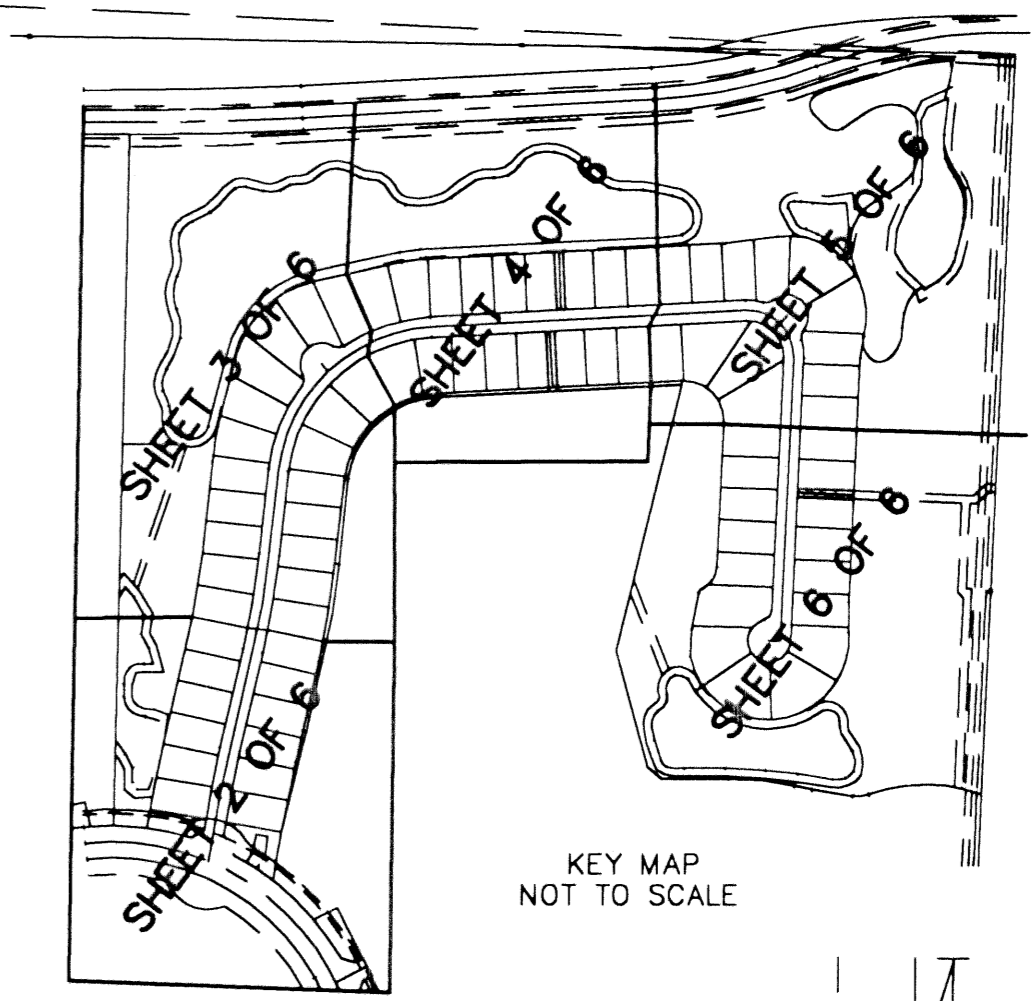
JANUARY, 2002 SHEET 3 OF 6



LINE	BEARING	LENGTH
L14	N30°52'04"W	51.77
L15	N08°14'37"E	47.86
L17	S29°26'53"W	28.81
L18	N41°24'04"W	33.35
L62	N02°07'43"W	23.39
L63	N23°35'06"W	29.26

CURVE	RADIUS	DELTA	LENGTH
C1	45.00	87°38'51"	68.84
C2	75.33	11°47'54"	15.51
C3	45.00	64°35'07"	50.73
C5	40.00	21°27'22"	14.98
C7	66.00	56°38'25"	65.24
C8	265.21	14°09'13"	65.52
C9	117.00	43°00'07"	87.81
C10	101.62	50°56'26"	81.09
C11	73.00	45°08'53"	57.52
C12	74.84	25°51'49"	33.78
C13	50.00	62°13'20"	54.30
C14	229.55	09°07'44"	36.57
C15	153.00	23°43'04"	63.33
C16	112.78	19°39'44"	38.70
C17	30.00	50°53'35"	26.65
C18	338.29	7°50'56"	46.34
C19	78.00	42°52'32"	58.37
C21	40.00	39°03'50"	22.27
C22	63.80	49°40'52"	55.32
C23	69.00	83°37'19"	100.70

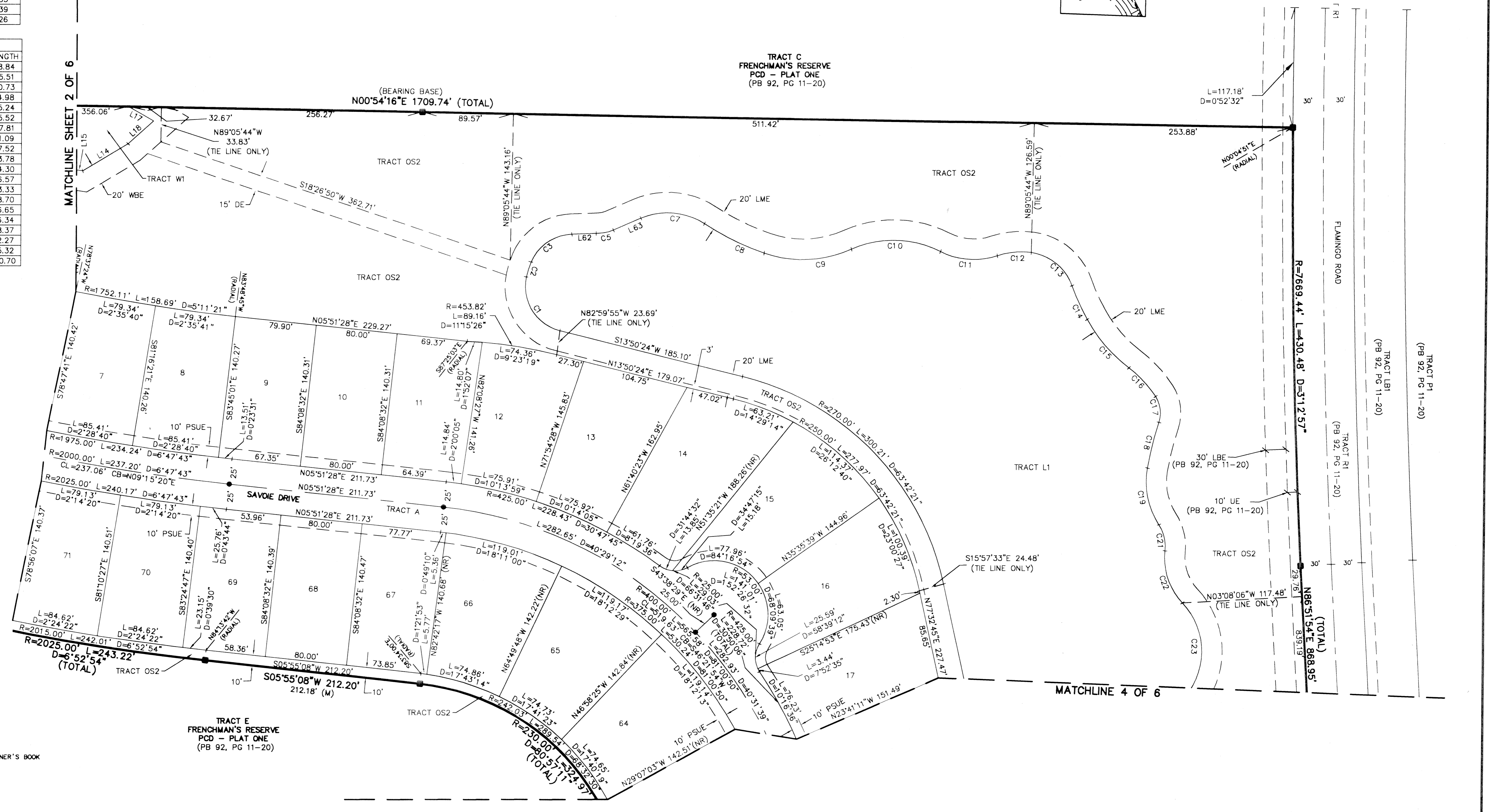
- LEGEND:**
- CL = CENTERLINE
 - WSE = WATER AND SEWER EASEMENT
 - PBCO = PALM BEACH COUNTY
 - LAE = LIMITED ACCESS EASEMENT
 - LBE = LANDSCAPE BUFFER EASEMENT
 - LME = LAKE MAINTENANCE EASEMENT
 - LSE = LIFT STATION EASEMENT
 - (C) = CALCULATED
 - CMG = COMMISSIONER'S MINUTES BOOK
 - DE = DEED EASEMENT
 - DB = DEED BOOK
 - FND = FOUND
 - FLP = FLORIDA POWER & LIGHT
 - IP = IRON PIPE
 - IRC = IRON ROD WITH PLASTIC CAP
 - LB = LICENSED BUSINESS
 - LS = LICENSED SURVEYOR
 - (M) = MEASURED
 - MCCB = MINUTES OF THE COUNTY COMMISSIONER'S BOOK
 - MON = MONUMENT
 - ORB = OFFICIAL RECORD BOOK
 - (P) = PLAT
 - PB = PLAT BOOK
 - PC = PAGE
 - POB = POINT OF BEGINNING
 - POC = POINT OF COMMENCEMENT
 - PRM = PERMANENT REFERENCE MONUMENT
 - PSUE = PRIVATE NON-EXCLUSIVE EASEMENT
 - R/W = RIGHT-OF-WAY
 - RPB = ROAD PLAT BOOK
 - SUA = SEACOAST UTILITY EASEMENT
 - (S) = SURVEY
 - UE = UTILITY EASEMENT
 - WBE = WETLAND BUFFER EASEMENT
 - = PERMANENT CONTROL POINT "LB#7055"
 - = SET 4" x 4" CONCRETE MONUMENT "LB#7055"



STATE OF FLORIDA
COUNTY OF PALM BEACH
THIS PLAT WAS FILED FOR
RECORD AT _____ M.
THIS _____ DAY OF _____
A.D. 2001 AND DULY RECORDED
IN PLAT BOOK _____ ON
PAGES _____ AND _____

DOROTHY H. WILKEN
CLERK CIRCUIT COURT

BY: _____
DEPUTY CLERK



Wantman Group, Inc.
Engineering ♦ Surveying ♦ Mapping
901 NORTHPOINT PARKWAY, SUITE 204
WEST PALM BEACH, FL 33407
(561) 687-2220 phone (561) 687-1110 fax
CERT No. 6091 - LB No. 7055

CAD	K:\TOLLBROS\FRENCHMAN\DWG\218PLATD			
REF	K:\TOLLBROS\FRENCHMAN\DWG\218MGO1			
FLD	RP/AB	FB. 000	PG. 00	JOB 218D
OFF	AJP/MRJ			DATE 8/20/01
CKD	RBP	SHEET 3 OF 6		DWG